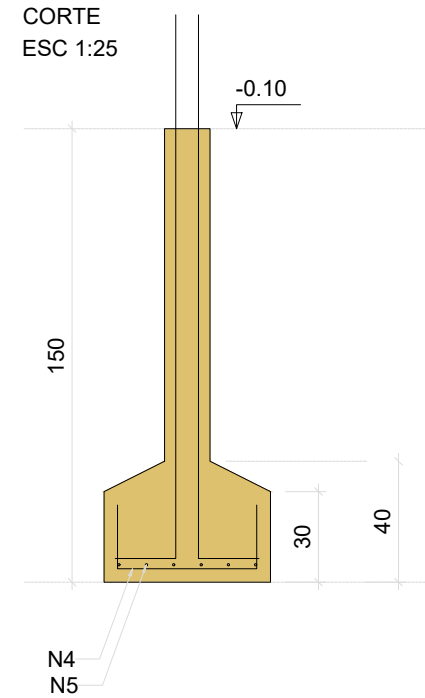
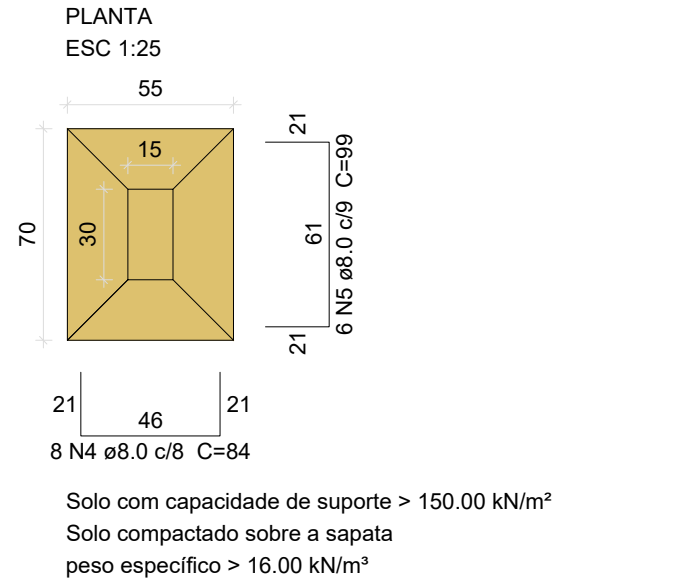
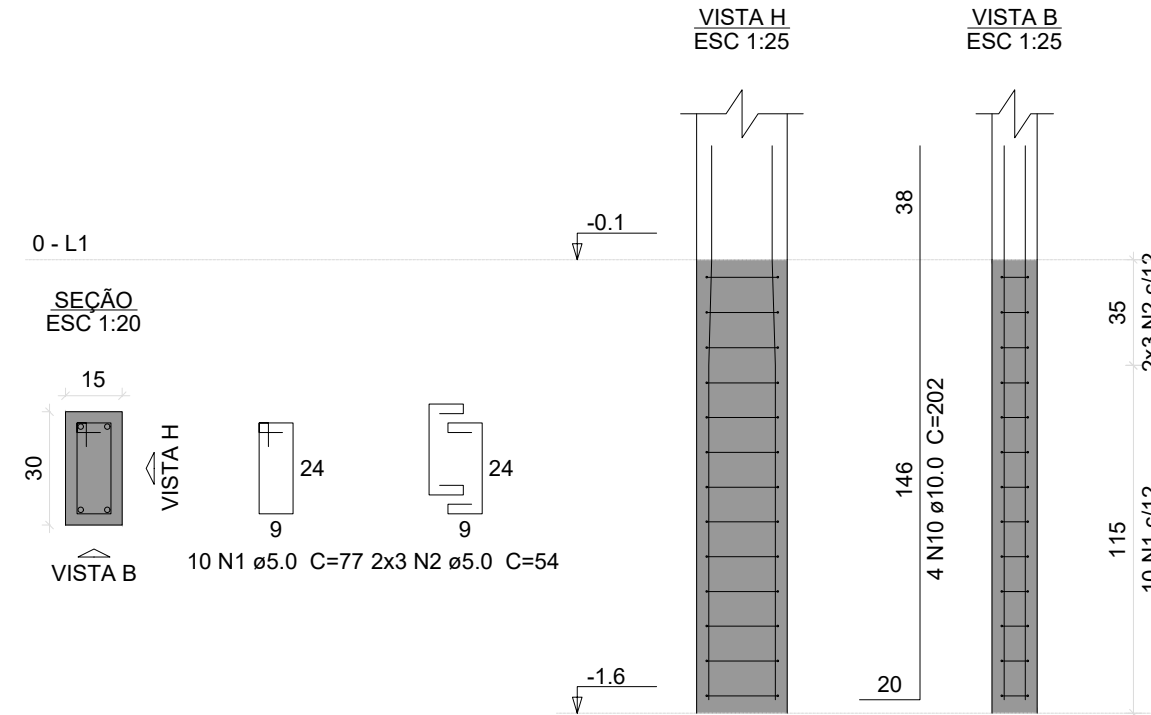


S1=S2=S4=S5=S6=S7=S8=S9=S10=S13



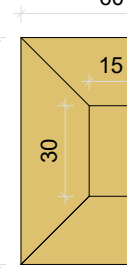
P1=P2=P4=P5=P6=P7=P8=P9=P10=
=P13



S3

PLANTA

ESC 1:25



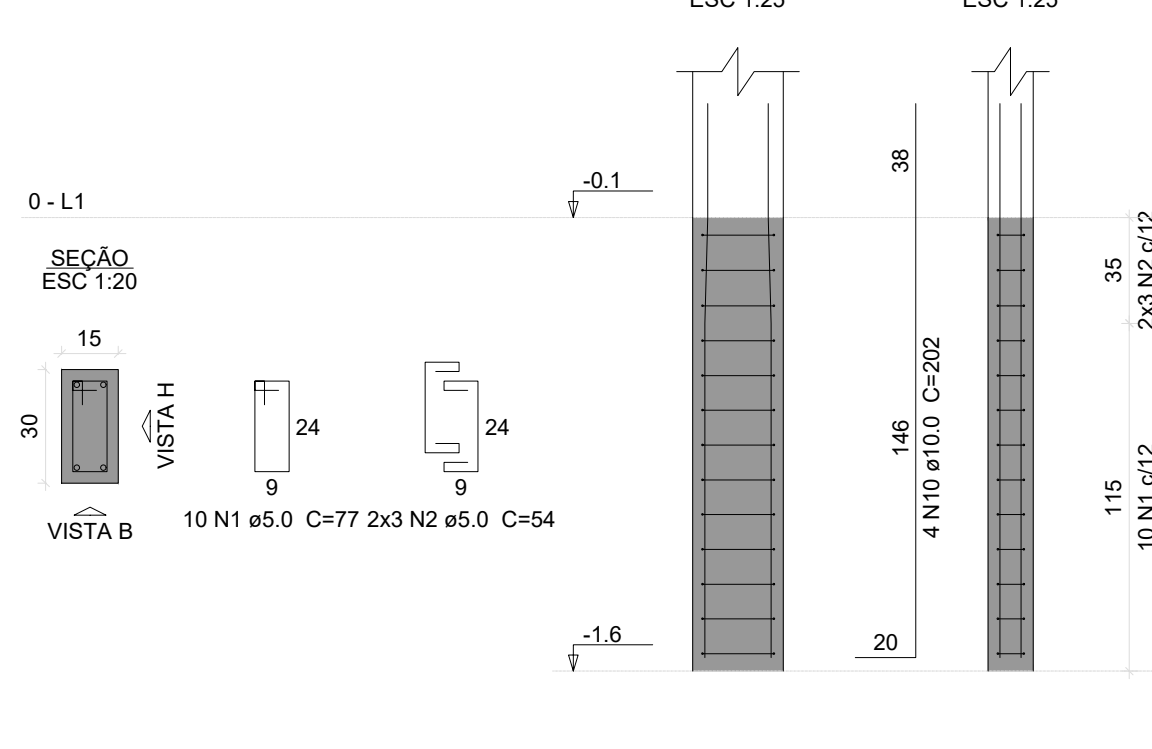
Solo com capacidade de suporte > 150.00 kN/m²
Solo compactado sobre a sapata
peso específico > 16.00 kN/m³

CORTE

ESC 1:25



P3



Relação do aço

10xS1	S3	S11
S12	V1	V2
V3	V4	V5
V6	V7	V8
V9		

AÇO	N	DIAM (mm)	QUANT	C.UNIT (cm)	C.TOTAL (cm)
CA60	1	5.0	130	77	10010
	2	5.0	78	54	4212
	3	5.0	321	87	27927
CA50	4	8.0	80	84	6720
	5	8.0	66	99	6534
	6	8.0	15	89	1335
	7	8.0	6	104	624
	8	8.0	6	84	672
	9	8.0	6	99	594
	10	10.0	52	202	10504
	11	10.0	2	1044	2088
	12	10.0	2	1061	2122
	13	10.0	2	509	1018
	14	10.0	2	542	1084
	15	10.0	4	544	2176
	16	10.0	2	1124	2248
	17	10.0	2	1177	2354
	18	10.0	6	789	4734
	19	10.0	4	806	3224
	20	10.0	6	259	1554
	21	10.0	2	292	584
	22	10.0	2	822	1644

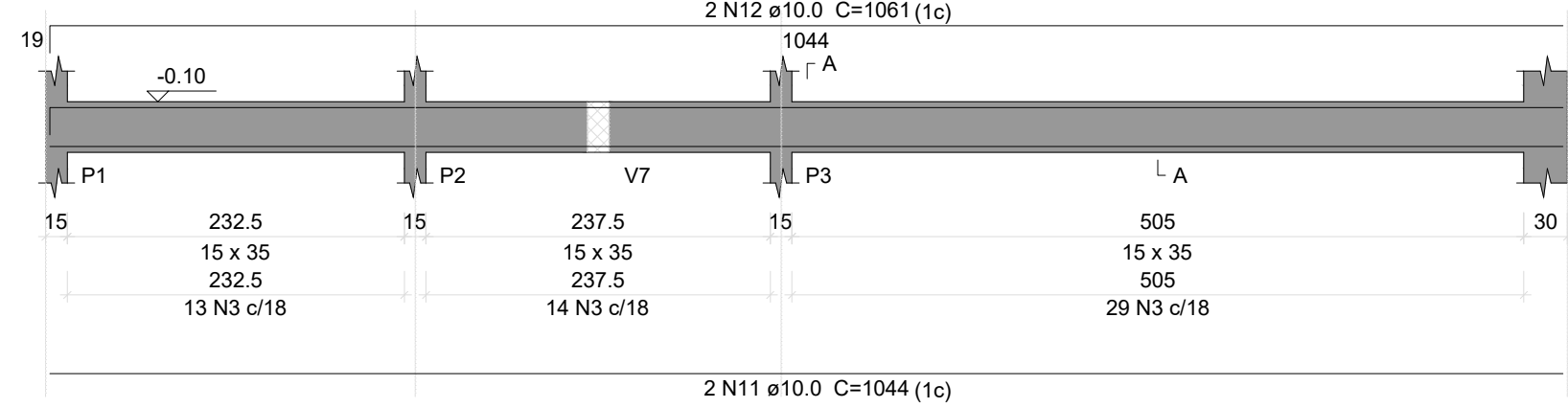
Resumo do aço

AÇO	DIAM (mm)	C.TOTAL (m)	PESO + 10 % (kg)
CA50	8.0	164.8	71.5
CA60	10.0	353.4	239.6
PESO TOTAL (kg)	5.0	421.5	71.5
CA50	311.2		
CA60	71.5		

Volume de concreto (C-25) = 5.38 m³
Área de forma = 70.07 m²

V1

ESC 1:50



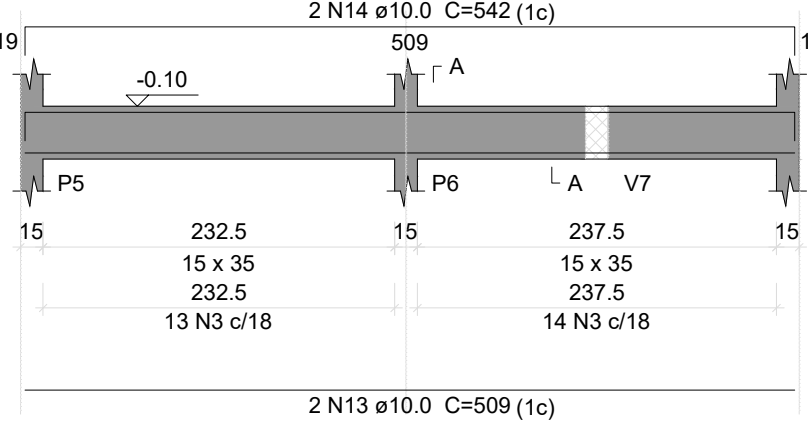
SEÇÃO A-A

ESC 1:25



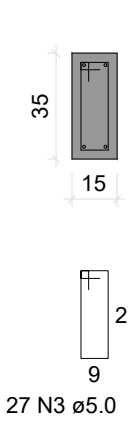
V2

ESC 1:50



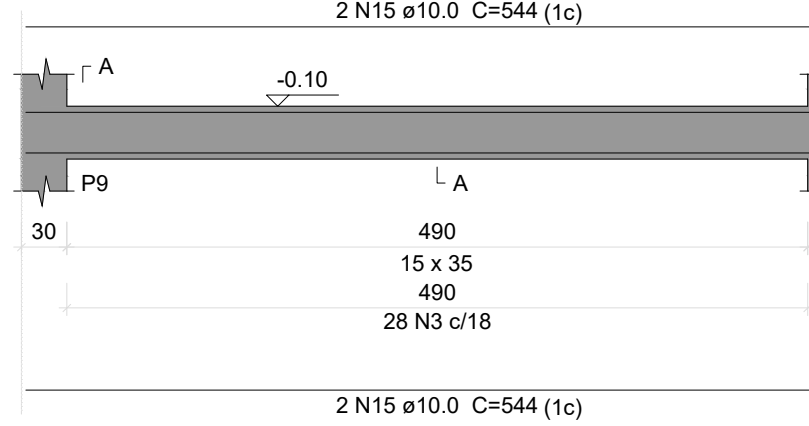
SEÇÃO A-A

ESC 1:25



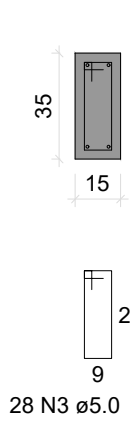
V3

ESC 1:50



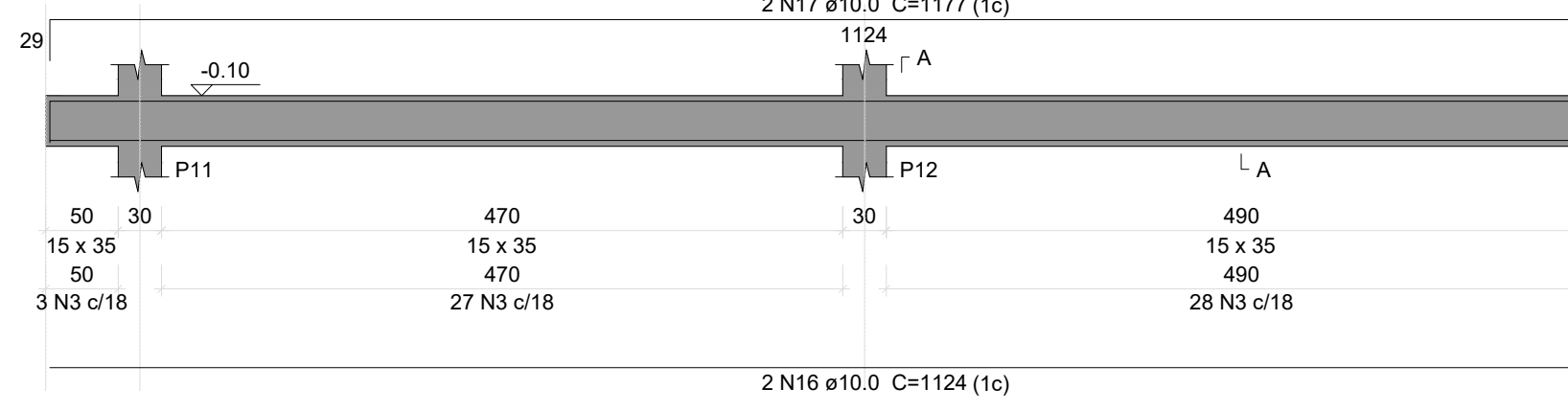
SEÇÃO A-A

ESC 1:25



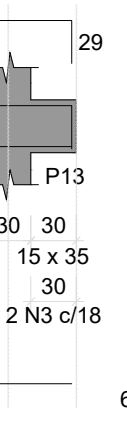
V4

ESC 1:50



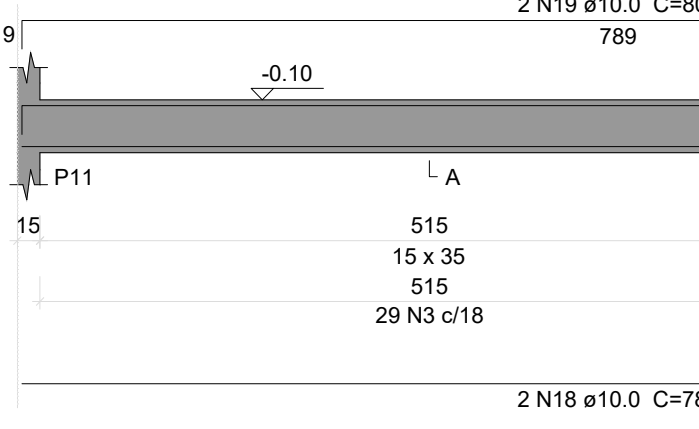
SEÇÃO A-A

ESC 1:25



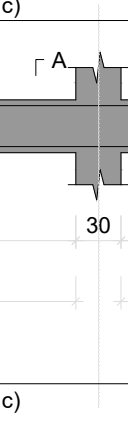
V5

ESC 1:50



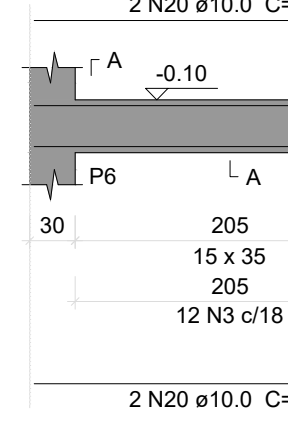
SEÇÃO A-A

ESC 1:25



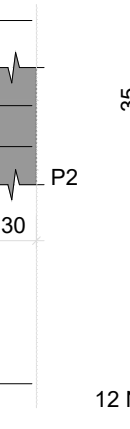
V6

ESC 1:50



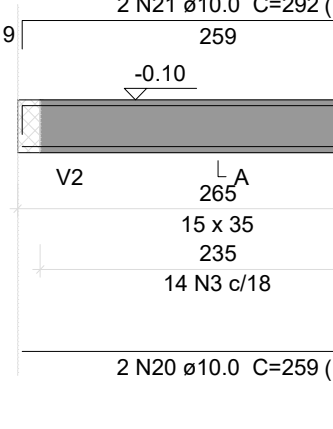
SEÇÃO A-A

ESC 1:25



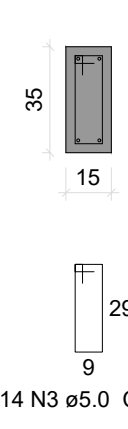
V7

ESC 1:50



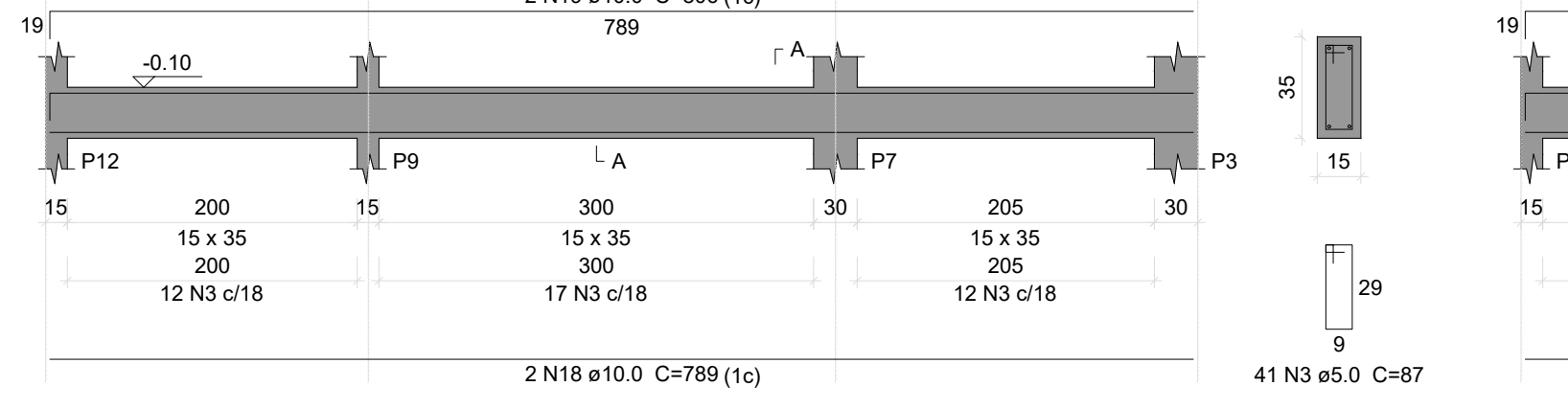
SEÇÃO A-A

ESC 1:25



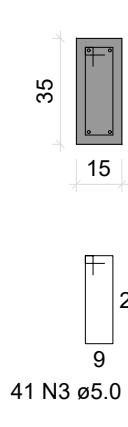
V8

ESC 1:50



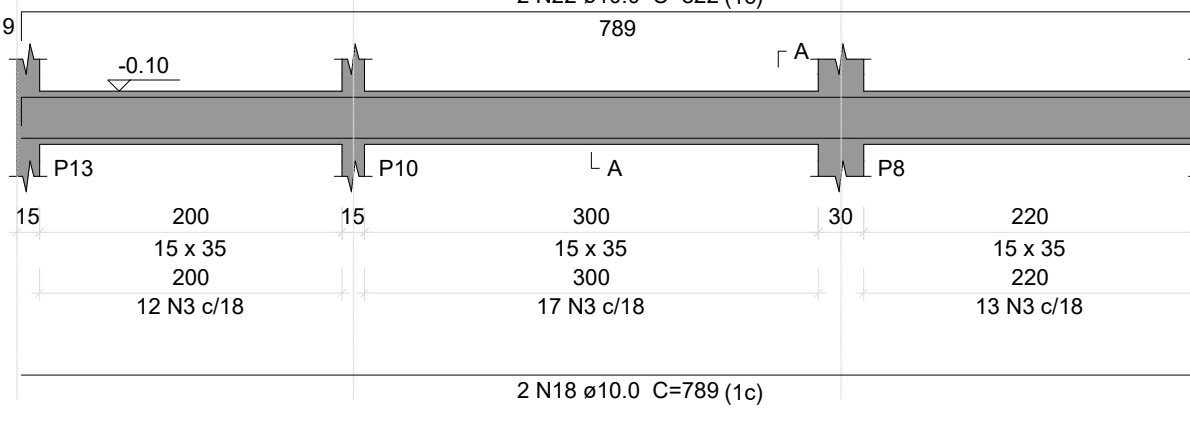
SEÇÃO A-A

ESC 1:25



V9

ESC 1:50



SEÇÃO A-A

ESC 1:25

